

A Different Ewe Project Bag

Yarn Along the Rockies



By Kris Jaeger for Ewe And me
Yarn Along The Rockies 2017



About Ewe And Me

EWE and me ... a yarn boutique that is all about EWE. We specialize in an environment that focuses on comfort for all our patrons. We have unique yarns, needles, and must-have items that are typically not found in your average yarn shop. We buy local yarns and U.S made fibers for your pleasure, whether it be knitting, crocheting, weaving, or spinning. Join our community environment, settle in and let our helpful staff get you started on your next handmade creation. When you want to start a new hobby, we have a knowledgeable staff that delights in teaching techniques and tricks to hone your skills, whatever level they might be.

Construction Notes

A drawstring project bag with colorful sheep worked in tapestry crochet.

Learn more about how to work Tapestry Crochet at <http://www.tapestrycrochet.com/>

Finished Measurements:

10.5" x 9" Finished

Gauge:

24 sts & 26 rows = 4" / 10 cm in Single Crochet
Meeting this exact gauge is not crucial, but any major differences will affect the size of the finished bag.

Yarn:

- The Fiber Seed, Sprout Sock, 90% Superwash Merino/10% Nylon
- 122 yds, Green
- 165 yds, Blue Steel
- The Fiber Seed, Sprout Sock, 90% Superwash Merino/10% Nylon
- 15 yds, Variagated Green/Yellow
- 15 yds, Black
- 15 yds, White
- 16 yds of Magenta
- 16 yds of Red Purple
- 16 yds of Blue Purple
- (Alternative for Magenta, Red Purple, and Blue Purple: You can either replace it with 48 yards of a solid color such as white OR a variegated yarn of your choosing)

Needles & Notions:

- Size E-5 (3.5mm) crochet hook or size that will give you a fairly dense tension
- Yarn needle
- Locking stitch marker

Abbreviations:

- ch - chain
- sc - single crochet
- sl st - slip stitch
- st(s) - stitch(es)
- sk - skip
- rep - repeat
- rev sc - reverse single crochet
- X - times

Pattern

Base of Bag

Using green, ch 4, join with sl st to form a ring (or use a magic loop).

Rnd 1: Ch 1, sc 6 in ring, place stitch marker in the 6th st. Move st marker to the last st of each row worked to keep track of the end of the round. Work in a spiral throughout.

Rnd 2: [2 sc in next st] 6 times. (12 sts)

Rnd 3: [Sc 1 in next st, 2 sc in next st] 6 times. (18 sts)

Rnd 4: [Sc 2 in next 2 sts, 2 sc in next st] 6 x. (24 sts)

Rnd 5: [Sc 3 in next 3 sts, 2 sc in next st] 6 x. (30 sts)

Rnd 6: [Sc 4 in next 4 sts, 2 sc in next st] 6 x. (36 sts)

Rnd 7: [Sc 5 in next 5 sts, 2 sc in next st] 6 x. (42 sts)

Rnd 8: [Sc 6 in next 6 sts, 2 sc in next st] 6 x. (48 sts)

Rnd 9: [Sc 7 in next 7 sts, 2 sc in next st] 6 x. (54 sts)

Rnd 10: [Sc 8 in next 8 sts, 2 sc in next st] 6 x. (60 sts)

Rnd 11: [Sc 9 in next 9 sts, 2 sc in next st] 6 x. (66 sts)

Rnd 12: [Sc 10 in next 10 sts, 2 sc in next st] 6 x. (72 sts)

Rnd 13: [Sc 11 in next 11 sts, 2 sc in next st] 6 x. (78 sts)

Rnd 14: [Sc 12 in next 12 sts, 2 sc in next st] 6 x. (84 sts)

Rnd 15: [Sc 13 in next 13 sts, 2 sc in next st] 6 x. (90 sts)

Rnd 16: [Sc 14 in next 14 sts, 2 sc in next st] 6 x. (96 sts)

Rnd 17: [Sc 15 in next 15 sts, 2 sc in next st] 6 x. (102 sts)

Rnd 18: [Sc 16 in next 16 sts, 2 sc in next st] 6 x. (108 sts)

Rnd 19: [Sc 17 in next 17 sts, 2 sc in next st] 6 x. (114 sts)

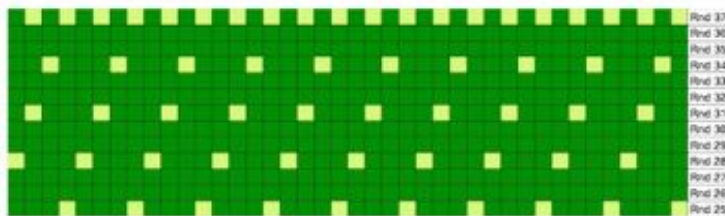
Rnd 20: [Sc 18 in next 18 sts, 2 sc in next st] 6 x. (120 sts)

Bag Sides

Rnds 21-24: Sc 120, moving your stitch marker to the last stitch of each row as you go. Begin carrying variegated green in the last few stitches of Rnd 24.

Note: The tapestry color charts all represent one third of the stitches around the bag, so repeat 3 times.

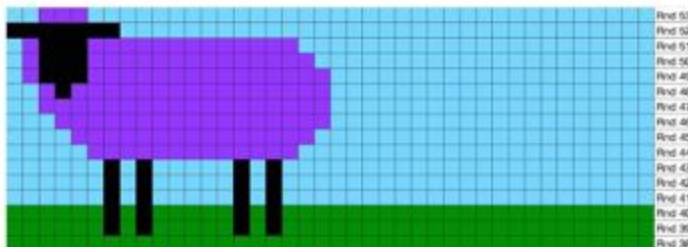
Rnds 25-37: Work according to the tapestry color [Chart A](#):



Rnds 38-53: Begin carrying black in the very beginning of Rnd 39. Work according to the tapestry color chart B, adding and changing colors as needed. Break off the black in the end of Rnd 43. In Rnd 44 begin carrying the color for the next sheep in the blue stitches before it. Each sheep is a different color and so, by the end of the round, you will be carrying 4 yarns. One for each sheep and one for the sky. When you reach Rnd 48, begin carrying the black as well in order to work the faces of the sheep. Break the Chart A black off after completing Rnd 52 and break off each color as you complete the corresponding sheep in Rnd 53.

A Different Ewe Project Bag Yarn Along The Rockies 2017

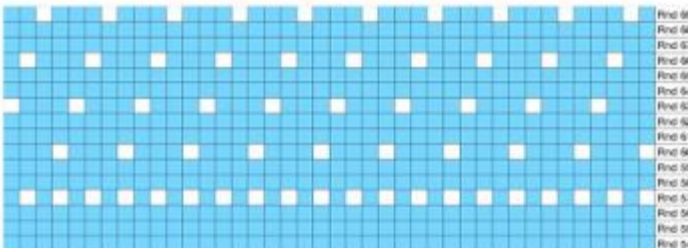
Chart B



Note: While working the sheep you will be using up to 5 different colors in the same row. Don't rush and take your time as they will inevitably become troublesome and twisted. It will be less frustrating if you sort them out regularly.

Rnds 54-69: Work according to the tapestry color chart C. Begin carrying white in the end of Rnd 56.

Chart C:



Rnds 70-74: Sc 120 in blue, moving your stitch marker to the last stitch of each row as you go.

Rnd 75: [Ch 2, sk 2 sts, sc 2] 30 times.

Rnd 76: [Sc 2 in ch-2 sp, sc 2] 30 times.

Rnds 77-78: Sc 120.

Finishing

After Rnd 78, sl st 2, fasten off & weave in ends.

Optional Edge Finish

Rnd 78: Sc 120, sl st 1

Rnd 79: Beginning in the last sc, rev sc 120, sl st to beginning of row, fasten off and weave in ends.

Drawstring

Ch 140, turn, sl st 139 in the back back bumps starting in the second ch from hook. It should be about 24" long when you're done. Weave the ends in and then thread your cord through the holes around the upper part of your bag. Tie the ends together and pull the bag closed.