

# Riviera Mosaic Cowl

Yarn Along the Rockies



By Whitney Buckholts for LambShoppe  
Yarn Along The Rockies 2017



## Finished Measurements:

23.5" Around x 7.5" Tall

## Gauge:

17 sts = 4"

*Meeting this exact gauge is not crucial, but any major differences will affect the size of the finished cowl.*

## Yarn:

2 Skeins (1 skein each of 2 contrasting colors)  
Lhasa by Debbie Bliss (50% Cashmere, 50% Yak)

## Needles & Notions:

US 10 circular needing 16" or 20"  
Tapestry needle  
Stitch Markers

## Abbreviations:

MC – Main Color  
CC – Contrasting Color  
CO – Cast on  
K – Knit  
Sl – slip stitch with yarn in back

## About Lamb Shoppe

Nestled in a quiet, tree-lined street in north Cherry Creek, LambShoppe is truly a gem which is open seven days a week. LambShoppe invites customers to shop, sit and relax, enjoy the Coffee Bar, make new friends and share knitting ideas and experiences. Over the last ten years, LambShoppe has indeed grown from customers to community to family.

## Pattern

Using long tail cast on and MC CO 100 stitches. Join in the round placing marker at the beginning of the round.

### Bottom Border

Continuing with MC Purl 1 round. Adding CC knit 1 round then purl 1 round. Using main color knit 1 round then purl 1 round.

### Body

Using chart or written mosaic instructions work rounds 1-34 once then rounds 1-14.

### Top Border

Using MC knit 1 round, purl 1 round. Using CC knit 1 round, purl 1 round. Using main color knit 1 round purl one round. Bind off all stitches knit wise.

Weave in ends block and enjoy

### Written Mosaic Instructions

*Round 1:* Using MC \* (k1, sl 1) 3 times, K3, sl1 rep from \* to end of the round

*Round 2 and all even rounds:* using the same yarn that you knit with in the previous row, Purl the same stitches that you knit and slip the same stitches that you slipped.

*Round 3:* Using CC \*(sl1, k1) twice, sl1, k3, (sl1, k1, sl1, k3) twice rep from \* to end of the round

*Round 5:* Using MC \*(k1, sl1) twice k3, sl1, k1, sl1, k5, sl1, k1, sl1, k2 rep from \* to end of the round

*Round 7:* Using CC \* k2, sl1, k3, sl1, k1, sl1, k7, (sl1, k1) twice rep from \* to end of the round

*Round 9:* Using MC \*k5, sl1, k1, sl1, k9, sl1, k1, sl1 rep from \* to end of the round

*Round 11:* Using CC \*sl1, k3, sl1, k1, sl1, (k5, sl1) twice, k1 rep from \* to end of the round

*Round 13:* Using MC \*(k1, sl1) 3 times, k5, sl1, k1, sl1, k5, sl1 rep from \* to end of the round

*Round 15:* Using CC \* (sl1, k1,) twice, sl1, k5, sl1, k3, sl1, k5 rep from \* to end of the round

*Round 17:* Using MC \* (k1, sl1) twice, k5, sl1, k5, sl1, k4 rep from \* to end of the round

*Round 19:* Using CC \* (sl1, k1,) twice, sl1, k5, sl1, k3, sl1, k5 rep from \* to end of the round

*Round 21:* Using MC \*(k1, sl1) 3 times, k5, sl1, k1, sl1, k5, sl1 rep from \* to end of the round

*Round 23:* Using CC \*sl1, k3, sl1, k1, sl1, (k5, sl1) twice, k1 rep from \* to end of the round

*Round 25:* Using MC \*k5, sl1, k1, sl1, k9, sl1, k1, sl1 rep from \* to end of the round

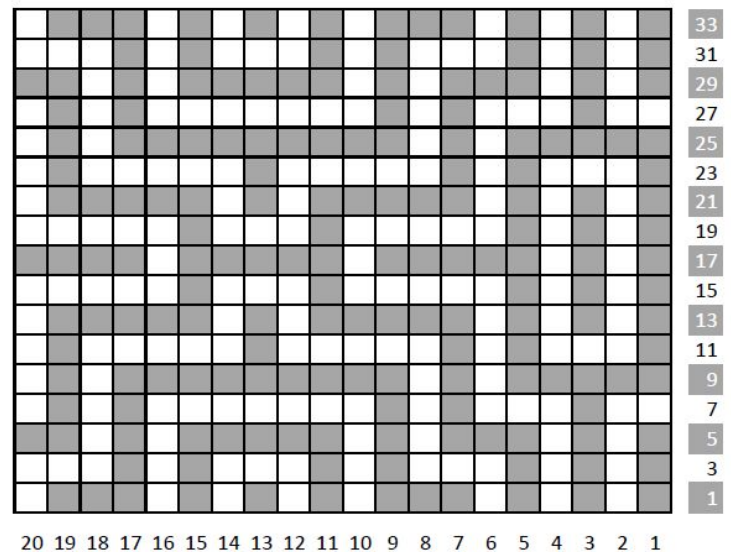
*Round 27:* Using CC \* k2, sl1, k3, sl1, k1, sl1, k7, (sl1, k1) twice rep from \* to end of the round

*Round 29:* Using MC \*(k1, sl1) twice k3, sl1, k1, sl1, k5, sl1, k1, sl1, k2 rep from \* to end of the round

*Round 31:* Using CC \*(sl1, k1) twice, sl1, k3, (sl1, k1, sl1, k3) twice rep from \* to end of the round

*Round 33:* Using MC \* (k1, sl 1) 3 times, K3, sl1 rep from \* to end of the round

### Charted Mosaic Instructions



### Finishing

Weave in all ends.

Wash and block flat!